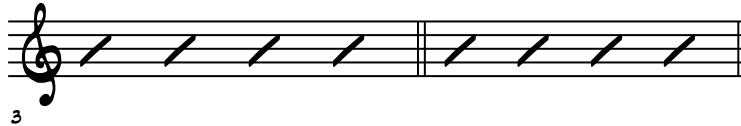


BARRE CHORDS



HERE ARE TWO MAJOR CHORDS. THE 'F' CHORD REPRESENTS BARRE CHORDS WITH THE ROOT ON THE 6TH STRING AND THE 'B FLAT' CHORD REPRESENTS BARRE CHORDS WITH THE ROOT ON THE 5TH STRING. IT IS IMPORTANT TO REMEMBER THAT THESE CHORDS ARE MOVABLE. FOR EXAMPLE, TO MAKE A F# CHORD YOU WOULD USE THE 'F' SHAPE STARTING ON THE 2ND FRET OF THE 6TH STRING.



HERE ARE TWO MINOR CHORDS. THE SAME PRINCIPAL APPLIES HERE. FOR EXAMPLE, TO MAKE A B MINOR CHORD YOU WOULD USE THE 'B FLAT' SHAPE STARTING ON THE 2ND FRET OF THE 5TH STRING.



HERE IS A PRACTICE PROGRESSION. THIS IS JUST ONE EXAMPLE OF MANY YOU COULD CREATE. GOOD LUCK!!